

ELECTRIC CHARACTERISTICS

Nominal Voltage	0/600 V _{ac} - 50/60 Hz
Phase to phase test voltage	2700 V _{dc} (2 s)
Phase to ground test voltage	3200 V _{dc} (2 s)
Climatic class	-25 / +85 °C



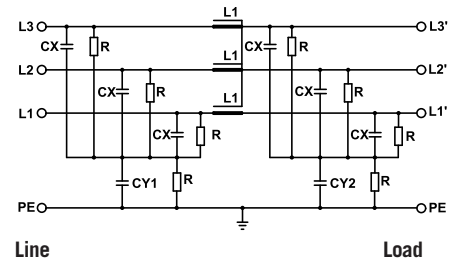
UL1283

CSA C22.2

* S.C.C.R. In according to UL508

FIN538S	Rated current 40°C (50°C)	ΣCx (μF) ± 5%	Cy1 (nF) ± 5%	Cy2 (nF) ± 5%	L1 (mH) ± 10%	S.C.C.R. (kA)	Max Fuse (200kA RK5 TD)	Power loss (W)
.007.M	8 (7)	20	1000	100	1.5	5*	10A 600 Vac	3
.016.M	18 (16)	20	1000	100	1.5	5*	45A 600 Vac	4
.030.M	34 (30)	60	1000	100	1.4	5*	50A 600 Vac	10
.042.M	47 (42)	60	1000	100	1.3	5*	90A 600 Vac	18
.055.M	60 (55)	60	1000	100	1.2	5*	100A 600 Vac	23
.075.M	83 (75)	60	1000	100	1.1	5*	175A 600 Vac	37
.100.M	110 (100)	60	1000	100	1.1	5*	125A 600 Vac	52
.130.M	142 (130)	60	1000	100	1	10*	175A 600 Vac	65
.180.M	200 (180)	60	1000	100	1	-	250A**	77

FIN538S ELECTRIC DIAGRAM



Total leakage current at 230 V phase to ground 50 Hz / 40°C
 Nominal <10mA
 Worst condition <80mA
 **Max 10kA should be provided by branch circuit fuse or a circuit breaker that clears the overcurrent fault within 3 cycles

MECHANICAL DIMENSIONS (MM)

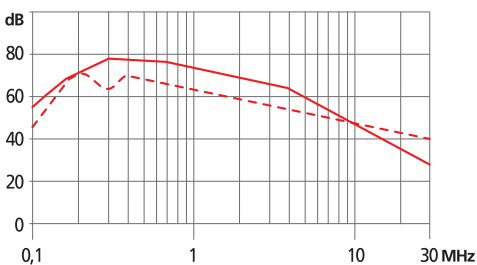
FIN538S	A	B	V	V1	F	H	I	L	N	d	Weight Kg
.007.M	100	90	22	16	5,4	250	220	7,5	60	M6	1,3
.016.M	100	90	22	16	5,4	250	220	7,5	60	M6	1,3
.030.M	100	90	22	16	5,4	250	220	7,5	60	M6	1,3
.042.M	100	90	22	35	5,4	250	220	7,5	60	M6	1,5
.055.M	100	90	22	35	5,4	250	220	7,5	60	M6	1,7
.075.M	135	85	22	37	6,5	270	240	7,5	60	M6	2,2
.100.M/.130.M	155	90	23,5	43	6,5	270	240	7,5	65	M10	3,2
.180.M	170	125	26	51	6,5	380	350	7,5	102	M10	5,1

TERMINAL BLOCK (mm²)

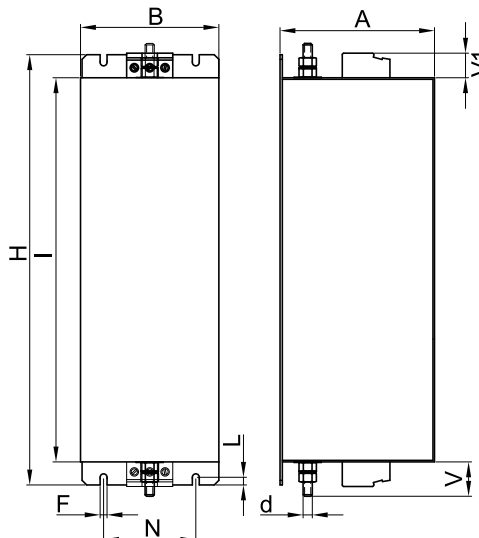
Terminals	Rigid Cable	Flexible Cable
K6	0.2 - 10	0.2 - 6
K6	0.2 - 10	0.2 - 6
K6	0.2 - 10	0.2 - 6
K10	0.5 - 16	0.5 - 10
K10	0.5 - 16	0.5 - 10
K25	6 - 35	10 - 25
K50	16 - 50	16 - 50
K95	25 - 95	35 - 95

INSERTION LOSS

— Common Mode - - - Differential Mode



CASE



ASSEMBLING

