

ELECTRIC CHARACTERISTICS

Nominal Voltage	0/480 V _{ac} - 50/60 Hz
Phase to phase test voltage	2600 V _{dc} (2 s)
Phase to ground test voltage	3100 V _{ac} - 50Hz (2 s)
Climatic class	-25 / +85 °C

Models available with current rating up to 1500A

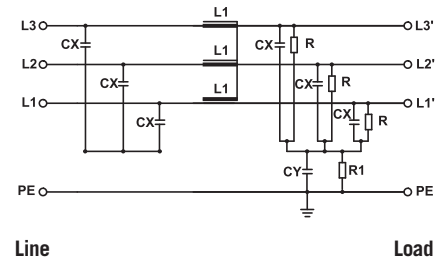


FIN3755	Nominal current (A)		$\sum C_x$ (μF) $\pm 10\%$	C_y (nF) $\pm 10\%$	L (mH) +50 -30%	Power loss (W)
	TA=40°C	TA=50°C				
.007.M	8	7	9	1000	2,7	3
.016.M	18	16	9	1000	2,1	4
.030.M	32	30	9	1000	1,9	11
.042.M	45	42	9	1000	1,6	15
.055.M	58	55	9	1000	1,4	19
.075.M	80	75	9	1000	1,2	25
.100.M	105	100	9	1000	1,1	42

Nominal <10mA
Worst condition <80mA

Total leakage current at 230 V phase to ground 50 Hz / 40°C

FIN3755 ELECTRIC DIAGRAM



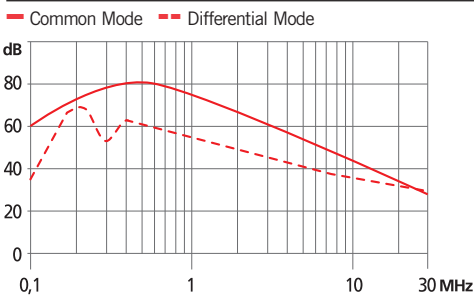
MECHANICAL DIMENSIONS (mm)

FIN3755	A	B	C	D	E	F	G	H	I	Weight Kg
.007.M	160	180	190	78	48	20	4	M5	1	1,1
.016.M	220	235	250	85	48	25	5	M5	1	1,5
.030.M	240	255	270	85	50	30	5	M6	1	2,1
.042.M	280	295	310	85	50	30	5	M6	1	2,7
.055.M	220	235	250	90	85	60	5	M6	1	3,1
.075.M	240	255	270	135	85	60	5	M8	1,5	3,6
.100.M	240	255	270	150	90	65	6	M10	1,5	4,2

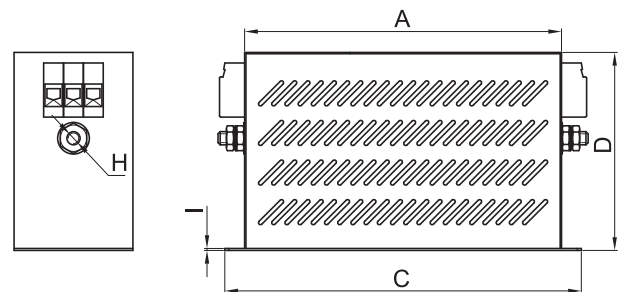
TERMINAL BLOCK (mm²)

Terminals	Rigid Cable	Flexible Cable
K4	0.2 - 6	0.2 - 4
K4	0.2 - 6	0.2 - 4
K10	0.5 - 16	0.5 - 10
K10	0.5 - 16	0.5 - 10
K16	0.5 - 25	0.5 - 16
K25	6 - 35	10 - 25
K50	16 - 50	16 - 50

INSERTION LOSS



CASE



ASSEMBLING

