



ELECTRIC CHARACTERISTICS

| | 1500 | 1500 HV |
|------------------------------|--------------|-----------------------------------|
| Nominal Voltage | 0/480 | 0/600 V _{AC} - 50/60 Hz |
| Phase to phase test voltage | 2200 | 2700 V _{DC} (2 s) |
| Phase to ground test voltage | 2900 | 3200 V _{AC} - 50Hz (2 s) |
| Climatic class | -25 / +85 °C | |

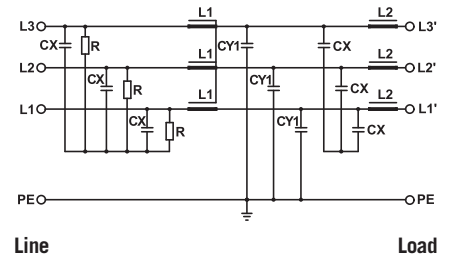


UL1283 Fino a 1500 A
CSA C22.2 Up to 1500 A

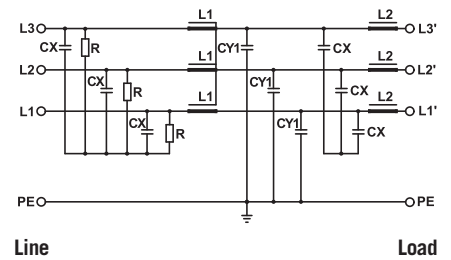
* S.C.C.R.
In according to UL508

| FIN1500 FIN1500HV | Rated current 40°C | ΣCx (μF) $\pm 5\%$ | Cy1 (nF) $\pm 5\%$ | L1 (mH) $\pm 10\%$ | L2 (μH) $\pm 10\%$ | S.C.C.R.* (kA) | Max Fuse (200kA RK5 TD) | Pow loss (W) |
|----------------------|-----------------------|--------------------------------------|-----------------------|-----------------------|------------------------------|-------------------|----------------------------|--------------|
| .005.V | 5 | 6,6 | 470 | 7 | 4 | 5* | 10A 600 Vac | 5 |
| .010.V | 10 | 6,6 | 470 | 5 | 4 | 5* | 15A 600 Vac | 7 |
| .016.V | 16 | 60 | 470 | 2 | 4 | 5* | 45A 600 Vac | 14 |
| .030.V | 30 | 60 | 470 | 2 | 4 | 5* | 50A 600 Vac | 11 |
| .050.V | 50 | 60 | 470 | 2 | 4 | 5* | 100A 600 Vac | 10 |
| .080.V | 80 | 60 | 470 | 1,8 | 4 | 5* | 175A 600 Vac | 35 |
| .100.V | 110 | 60 | 470 | 1,5 | 4 | 5* | 125A 600 Vac | 42 |
| .150.V | 150 | 60 | 470 | 1,3 | 2 | 10* | 175A 600 Vac | 74 |
| .200.V | 200 | 60 | 470 | 0,9 | 2 | - | 250A** | 90 |
| .280.V | 280 | 60 | 470 | 0,8 | 2 | - | 350A** | 80 |
| .280.B | 280 | 60 | 470 | 0,8 | 2 | - | 350A** | 78 |
| .360.B | 360 | 60 | 470 | 0,35 | 2 | - | ** | 152 |
| .500.B | 500 | 60 | 470 | 0,35 | 2 | - | ** | 196 |
| .750.B | 750 | 60 | 470 | 0,23 | 1 | - | ** | 98 |
| .1000.B | 1000 | 60 | 470 | 0,22 | 1 | - | ** | 101 |
| .1250.B | 1250 | 60 | 470 | 0,21 | 1 | - | ** | 105 |
| .1500.B | 1500 | 60 | 470 | 0,20 | 1 | - | ** | 120 |
| .1750.B | 1750 | 60 | 470 | 0,20 | 1 | - | - | 130 |
| .2000.B | 2000 | 60 | 470 | 0,18 | 1 | - | - | 140 |

FIN1500 ELECTRIC DIAGRAM



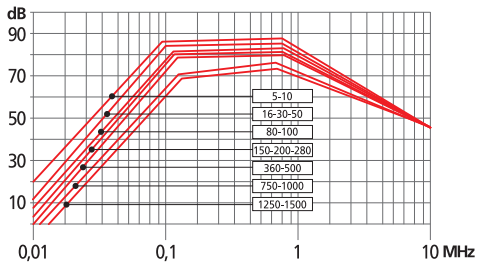
FIN1500HV ELECTRIC DIAGRAM



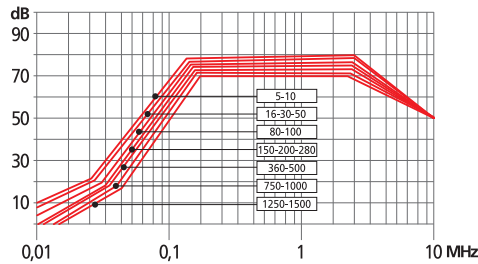
Total leakage current at 230 V phase to ground 50 Hz / 40°C
Nominal <35mA
Worst condition <105mA

**Max 10kA should be provided by branch circuit fuse or a circuit breaker that clears the overcurrent fault within 3 cycles

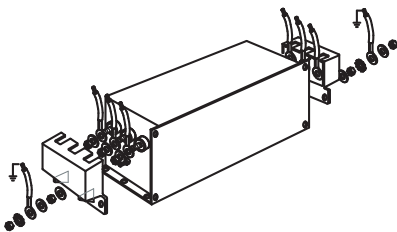
COMMON MODE ATTENUATION



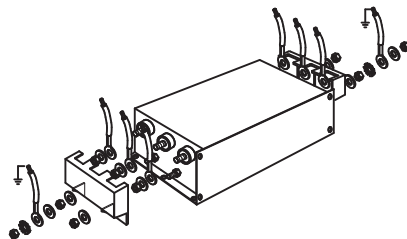
DIFFERENTIAL MODE ATTENUATION



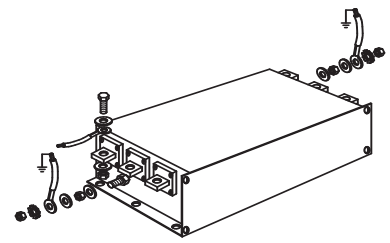
CASE 1/2/3 ASSEMBLING



CASE 4 ASSEMBLING

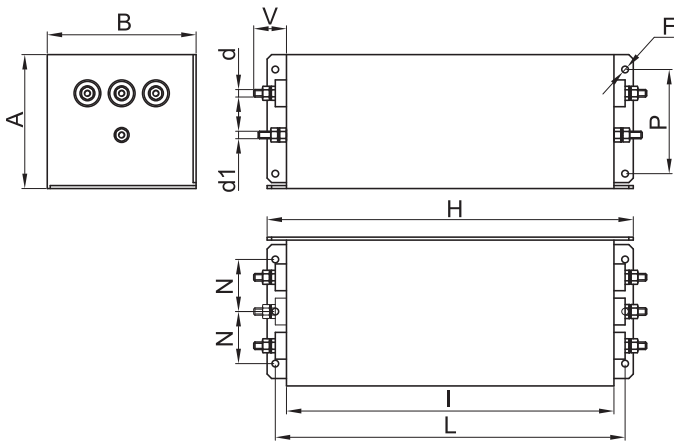
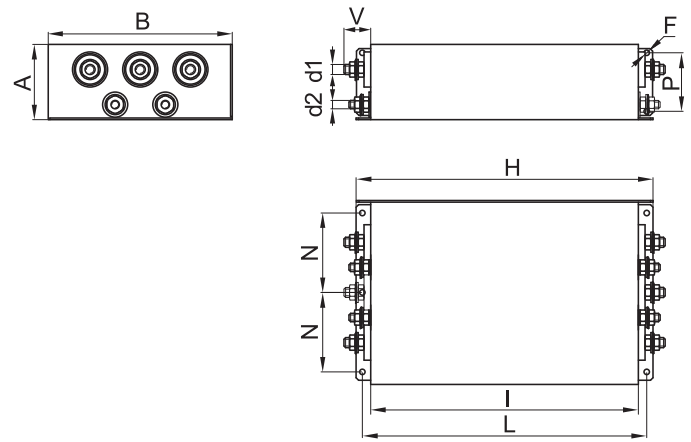


CASE 5/6/7/8 ASSEMBLING



MECHANICAL DIMENSIONS (mm)

| FIN1200 / FIN1200HV FIN1500 / FIN1500HV | A | B | d (ø) | d1 | d2 | d3 | V | F | H | I | L | N | P | Weight Kg | Case |
|--|-----|-----|-------|------|------|----|------|-----|-----|-----|-----|------|-----|-----------|------|
| .005.V/.010.V | 58 | 86 | M4 | M 4 | — | — | 14 | 4,5 | 186 | 160 | 176 | 30 | 40 | 1,7 | 1 |
| .016.V/.030.V | 90 | 100 | M5 | M 5 | — | — | 20,5 | 4,5 | 246 | 220 | 235 | 35 | 70 | 3,6-3,8 | 2 |
| .050.V | 90 | 100 | M6 | M 5 | — | — | 28 | 4,5 | 246 | 220 | 235 | 35 | 70 | 4,1 | 2 |
| .080.V/.100.V | 90 | 185 | M8 | M 8 | — | — | 25 | 6,5 | 356 | 320 | 340 | 77,5 | 70 | 11,7 | 3 |
| .150.V/.200.V | 90 | 220 | M10 | M 10 | M 10 | — | 29 | 6,5 | 356 | 320 | 340 | 95 | 70 | 14,4-15,8 | 4 |
| .280.V | 90 | 220 | M12 | M 12 | M 10 | — | 30 | 6,5 | 356 | 320 | 340 | 95 | 70 | 16,1 | 4 |
| .280.B | 90 | 220 | 8,5 | M 12 | 10 | 25 | 42 | 6,5 | 356 | 320 | 340 | 95 | 70 | 16,9 | 5 |
| .360.B | 130 | 230 | 8,5 | M 10 | 10 | 25 | 42 | 6,5 | 420 | 380 | 400 | 100 | 100 | 24,7 | 5 |
| .500.B | 130 | 230 | 10,5 | M 10 | 15 | 30 | 48 | 6,5 | 510 | 450 | 480 | 100 | 100 | 30,5 | 6 |
| .750.B | 160 | 250 | 13,5 | M 12 | 20 | 40 | 94 | 8,5 | 510 | 450 | 480 | 100 | 110 | 31 | 7 |
| .1000.B | 180 | 350 | 13,5 | M 12 | 20 | 60 | 97 | 8,5 | 610 | 550 | 580 | 150 | 130 | 59 | 8 |
| .1250.B | 180 | 350 | 13,5 | M 12 | 20 | 60 | 97 | 8,5 | 610 | 550 | 580 | 150 | 130 | 59 | 8 |
| .1500.B | 180 | 350 | 13,5 | M 12 | 20 | 60 | 97 | 8,5 | 610 | 550 | 580 | 150 | 130 | 59 | 8 |
| .1750.B | 180 | 350 | 13,5 | M 12 | 20 | 60 | 97 | 8,5 | 610 | 550 | 580 | 150 | 130 | 59 | 8 |
| .2000.B | 180 | 350 | 13,5 | M 12 | 20 | 60 | 97 | 8,5 | 610 | 550 | 580 | 150 | 130 | 59 | 8 |

CASE 1/2/3

CASE 4

CASE 5/6/7/8
